



## 4 Dairy Way

Kibworth Harcourt, Leicester, LE8 0SN  
Offers In The Region Of £295,000

**NO CHAIN**

Offered to the market with the benefit of no upward chain and vacant possession, this well-presented three-bedroom semi-detached home occupies a pleasant position on a popular modern development on the outskirts of Kibworth. Arranged over three floors, the property offers spacious and versatile accommodation ideally suited to first-time buyers, professional couples and growing families alike.

The accommodation is entered via an entrance hall with a useful downstairs WC. To the front of the property is a modern fitted kitchen featuring a range of integrated appliances, whilst to the rear, the generous open-plan lounge/diner provides an excellent space for both everyday living and entertaining, with French doors opening directly onto the rear garden.

To the first floor are two well-proportioned double bedrooms together with a family bathroom fitted with a modern three-piece suite.

Occupying the entire second floor, the impressive principal bedroom suite enjoys a range of

- Master En Suite
- Garage & Off Road parking
- Recently Built Semi Detached
- Family Bathroom
- Fitted Kitchen
- Three Bedrooms
- Rear Garden
- Lounge/Diner

### Viewing

Please contact our Berkley Leicester Office on 0116 2544755 if you wish to arrange a viewing appointment for this property or require further information.



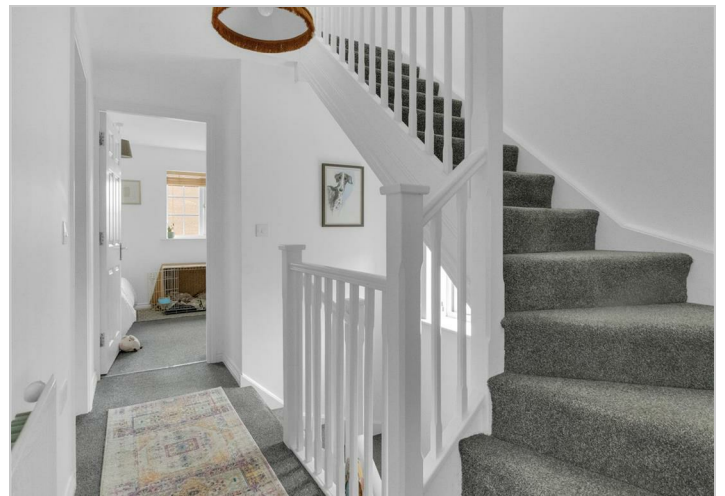
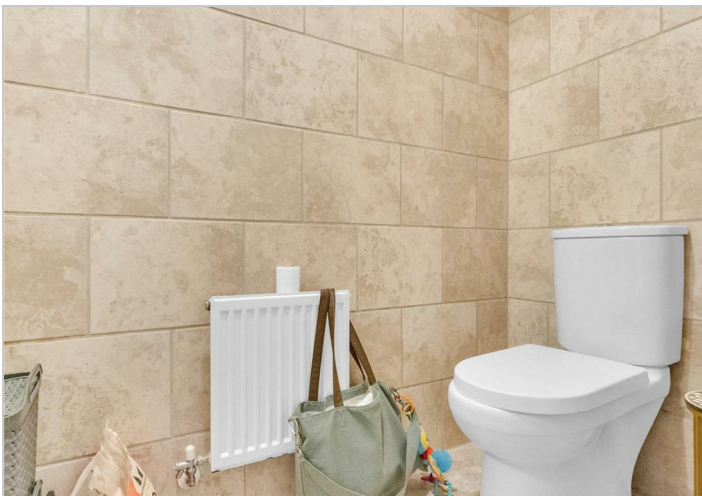
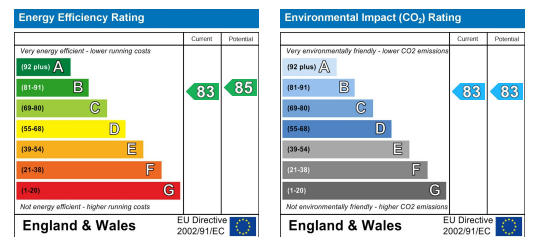
## Floor Plan



## Area Map



## Energy Efficiency Graph



These particulars, whilst believed to be accurate are set out as a general outline only for guidance and do not constitute any part of an offer or contract. Intending purchasers should not rely on them as statements of representation of fact, but must satisfy themselves by inspection or otherwise as to their accuracy. No person in this firm's employment has the authority to make or give any representation or warranty in respect of the property.